



## Thorncliffe Court, Kings Avenue, Brixton, SW4

£435,000

2 bedroom flat - purpose built for sale

### Property Details

A bright two double bedroom flat quietly positioned within a well-maintained, private mansion block on Kings Avenue. This secure, first floor flat boasts light and airy accommodation with neutral décor and over 700 square feet of internal living space. The front door to the apartment is situated off a grand communal entrance hall. Once inside there is a long, elegant hallway, running the length of the property. Off the hallway are the two double bedrooms, the master bedroom is a generous size whilst the second bedroom is also a comfortable double, making the property ideal for anyone looking to rent out a spare room or indeed share with friends. The separate kitchen is bright with all you need in terms of mod cons whilst the bathroom is spacious and contemporary. The heart of this apartment is the reception room, which offers plenty of space in which to relax and dine. The property is ideally located within walking distance to Abbeville Village, Clapham and Brixton High Streets. Chain-free.

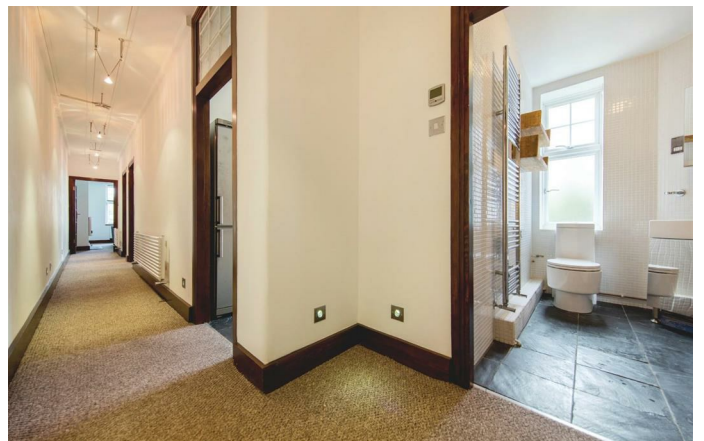
Council tax band C

EPC rating D (65)

### Features

- Two double bedrooms
- Period mansion block
- Over 700 square feet of internal living space
- Well maintained communal gardens
- Equidistant to Clapham and Brixton High Streets
- Abbeville Village and Brixton Village are both within walking distance
- Access to the Northern and Victoria tube lines
- Chain-free





Thorncliffe Court, Kings Avenue, Brixton, SW4



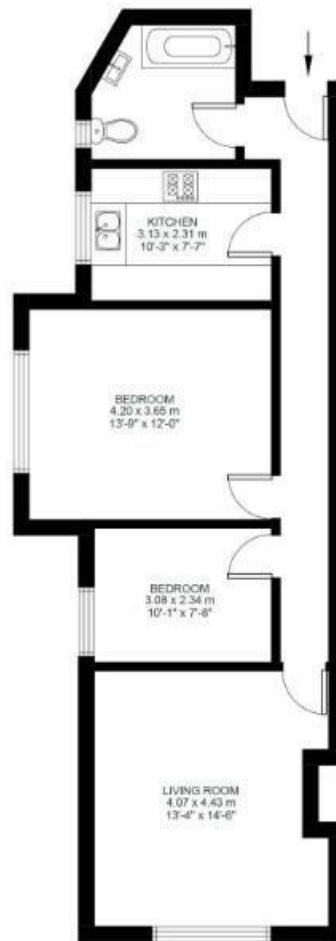
## 2 Bed Flat

Approx internal area:

**706 sqft 66 sqm**

While we do try our very best, floor plans are produced as a guide only and we take no responsibility for the precise accuracy with which any property is represented

Kings Avenue



First Floor





Thorncliffe Court, Kings Avenue, Brixton, SW4

